

TOM PRICE

ARCHITECT, P. A.

2004 YEAR IN REVIEW

This year of four hurricanes reminds us of the refuge our homes provide. Our French Eclectic in Narcoosee, FL (below left), constructed of stone, glass, and timber withstood the storms well and won the Aurora Award for Best Custom Home in its category.



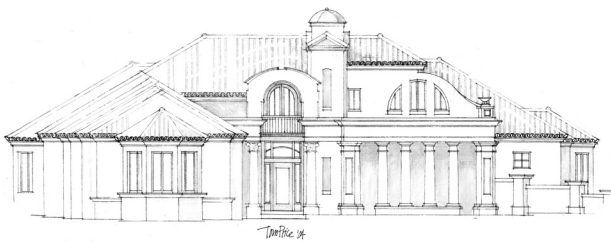
Recently completed is a Mediterranean Villa in Lake Nona (right).



In its second year of construction is a Mission Mediterranean in Isleworth, complete with a regulation NBA gymnasium (right).

Drawings are complete for a French Provençal Cottage in Winter Park (left).

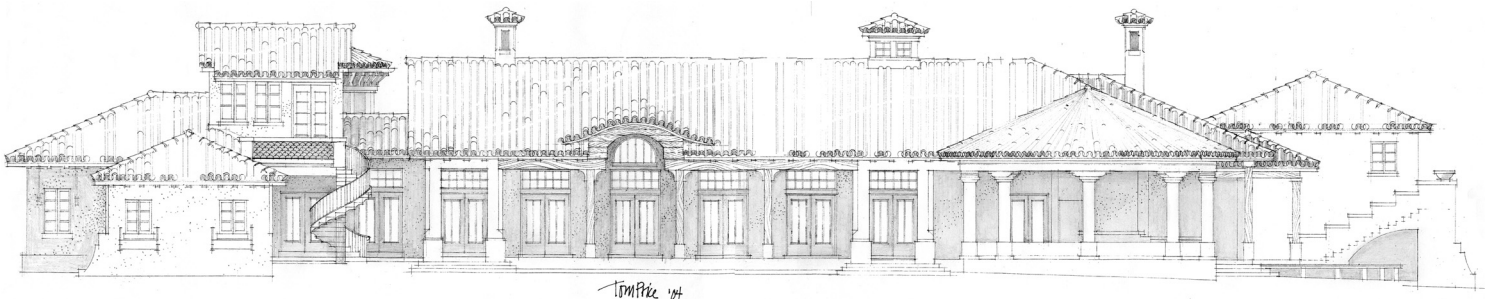
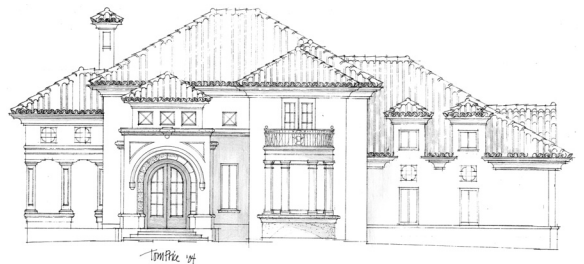
An Irish Country Estate is just under construction at Isleworth (right), complete with ballroom and balcony for the chamber orchestra.



At Destin on Florida's Gulf Coast, permit approvals are under way for a Bramante-inspired Roman Villa (above left).

The Copeland Historic District in Orlando has approved this Italian Renaissance Villa (right), on Lake Copeland overlooking the downtown skyline.

Drawings are nearing completion for this California Mission Colonial Villa, on Little Hawkins Island in the intracoastal near St. Simon's Island, Georgia. This is the Dunbar Creek elevation (below).



This Country Craftsman cottage (right), of stone, brick, and wood will nestle in an oak hammock in Central Florida's beautiful Lake County.



View these and other newly completed homes on our website at www.tompricearchitects.com.