

TOM PRICE

ARCHITECT, P. A.

2000 YEAR IN REVIEW

The year 2000 completes an amazing decade for our firm, positioning us as the nation's leading traditional residential architects. Our Acadian Low Country Cottage (right) at Celebration and our Old-Florida Mediterranean home (left) in Lake Nona each won an Aurora Award for Best Custom Home in their categories.



The same Old-Florida Mediterranean home was published in *Period Homes* magazine, and our Romanesque Cottage in Isleworth (right) was featured in *Florida Architecture* magazine.



Recently completed are a Norman Country Manor (left) at Lake Nona, a Victorian home (right) at Keene's Pointe, and

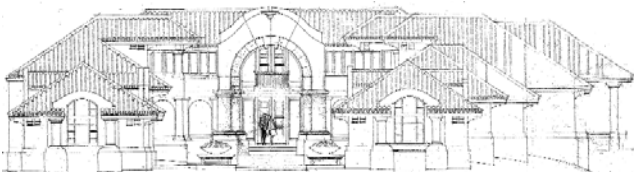


a French Country home (left) at Isle of Osprey.

Under construction are a Dutch Colonial home (right) on the Caribbean island of Nevis, and a British West Indies home (left) at Lake Nona.



Construction has just begun on a French Chateausque home (right) at Isleworth, and permitting is under way for an Italian Renaissance home (left) on Long Boat Key.



Construction Documents are nearing completion for a French Country home (right) in Stuart,



Florida and a European Villa (above) on Lake Down.

View these and other newly completed homes on our expanded website at www.tompricearchitects.com.

We look forward to what the year 2001 will bring!